




WINTER TEXTURELAND

A LANDSCAPE DESIGN TEMPLATE FOR FALL AND WINTER INTEREST

This plan focuses on low maintenance plants that highlight form, color and texture. It is sure to provide a stunning landscape to surround to your high-visibility areas.



PLANT LIST:

-  DWARF GLOBE BLUE SPRUCE
-  HEAVY METAL SWITCHGRASS
-  AUTUMN JOY SEDUM

Another great way to incorporate your business logo into the landscape is to choose plants that match the colors in your logo through flower or foliage color. Repeating these colors will draw even more attention from a distance. Just make sure to choose plants short enough to not cover the sign.

SUCCESSFUL LANDSCAPING TIPS FOR COMMERCIAL PROPERTIES

Plant in Large Groups: Plant in large groups to create plant masses which make your site appear organized and clean.

Low Maintenance: Consider using plants that are one-touch maintenance, such as: most ornamental grasses, shrubs, evergreens and even some perennials.

Texture and Form over Flower Color: Most flowers last only a few weeks, so rather than choosing plants for flower color, choose according to the texture and form for an attention grabbing landscape combination.

Water-wise Plants: Choose plants adapted for our region that require less water. Visit our [Xeriscape Demonstration Garden](#) to see these plants in action.



LANDSCAPE DESIGN TEMPLATES FOR COMMERCIAL SITES

INCORPORATING WATER-WISE AND LOW MAINTENANCE STRATEGIES FOR COMMERCIAL PROPERTIES IN THE PIKES PEAK REGION.



Colorado Springs Utilities

It's how we're all connected

448-4800

www.csu.org

DIGGING THE BLUES

A LANDSCAPE DESIGN TEMPLATE FOR LARGE AREAS

The "Digging the Blues" template is designed for large areas of commercial properties where a low water, low maintenance plant combination is desired. This combination contains plants that all have a "blue" feature while providing texture and interest year round.



BLUESTEM JOINT FIR ADDS INTEREST YEAR ROUND WITH ITS BLUE-GREEN JOINTED STEMS AND SMALL YELLOW FLOWERS FOLLOWED BY ORANGE BERRIES.

LITTLE BLUESTEM IS A UNIQUE ORNAMENTAL GRASS WITH ITS BLUE-GREEN SUMMER FOLIAGE AND MAROON FALL COLOR.



BLUE VELVET HONEYSUCKLE HAS STEEL BLUE FOLIAGE AND LIGHT PINK FLOWERS IN EARLY SUMMER.



Protect your investment! These plants grow best when pruned to keep their natural form..

RUSSIAN SAGE IS A GREAT PERFORMER IN THE PIKES PEAK AREA. PURPLE FLOWER SPIKES COVER THIS PLANT IN LATE SUMMER.



Consider adding large swaths of daffodils for early spring color.

Space plants according to mature size to ensure lower maintenance.

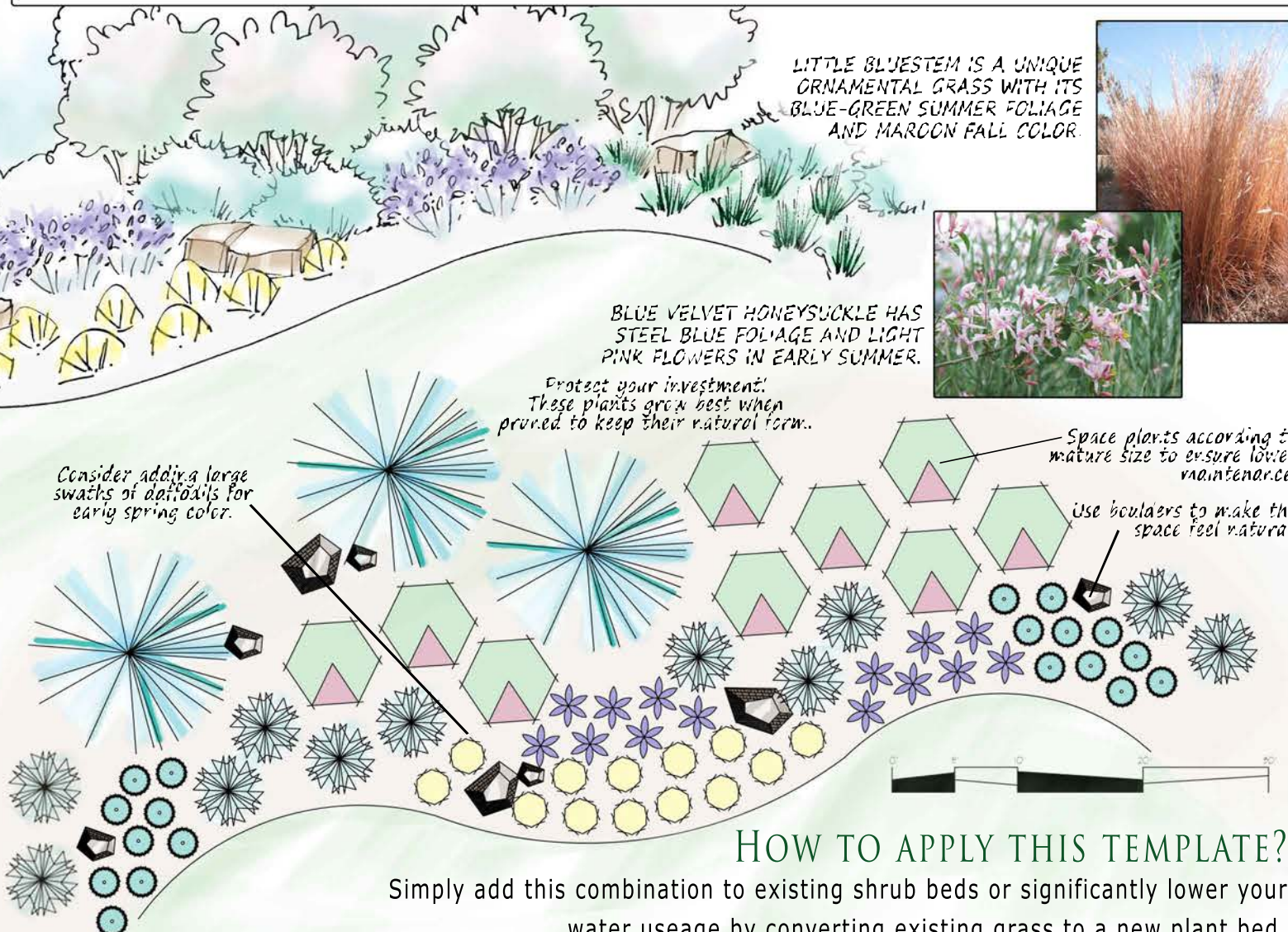
Use boulders to make the space feel natural.

BABY BLUE RABBITBRUSH IS A DWARF VARIETY OF A VERY LOW WATER NATIVE PLANT THE YELLOW FLOWERS ARE SHOWCASED AT THE END OF SUMMER AND ARE FOLLOWED BY TAN SEED HEADS FOR WINTER INTEREST



PLANT LIST:

-  VANDERWOLF PINE TREE
-  BLUE VELVET HONEYSUCKLE
-  BLUESTEM JOINT FIR
-  LITTLE BLUESTEM GRASS
-  RUSSIAN SAGE
-  BABY BLUE RABBITBRUSH



HOW TO APPLY THIS TEMPLATE?

Simply add this combination to existing shrub beds or significantly lower your water usage by converting existing grass to a new plant bed. Check out our irrigation rebates to find more great ways to save at www.csu.org.