



Colorado Springs Utilities
It's how we're all connected

Water Pressure Zone Project

Thursday, August 14, 2025

Pattie Bengier, Senior Public Affairs Specialist

Agenda

1. Team Introduction
2. Project Overview
3. Water System Overview
4. Phases
5. Customer Data Protection
6. Evaluation Process
7. Project Timeline
8. Q&A

Project Team

- Pattie Bengner, Public Affairs
- Rebecca Kerrigan, Public Affairs
- Rockie Wiley, Project Manager
- Natalie Crock, Engineer
- Bri Shaner, Designer



Project Overview

We will be adjusting a water pressure zone boundary on the west side of the city, near Garden of the Gods Park.

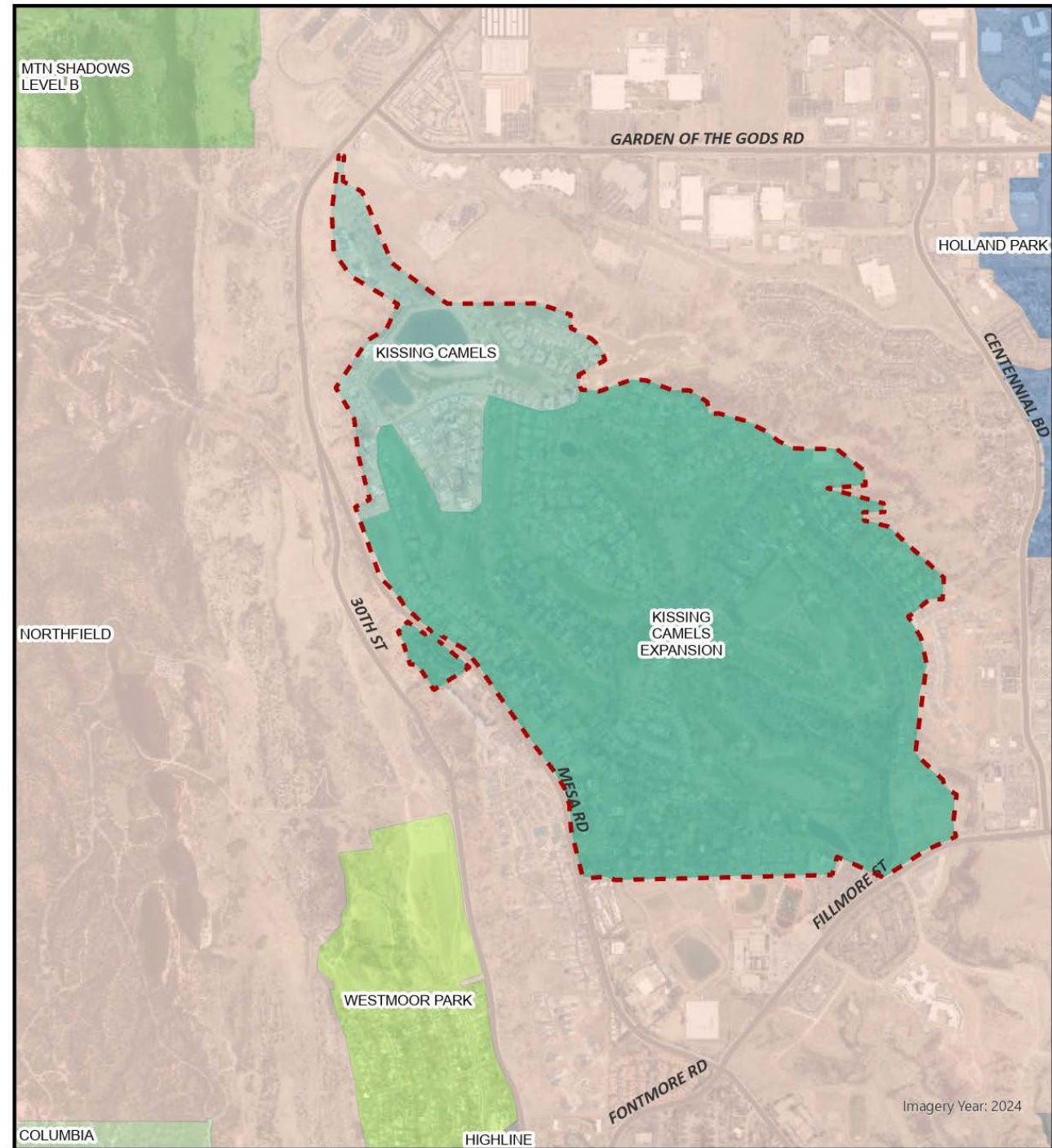
Purpose and benefits:

- Preparation for future system upgrades
- Increased water pressure to area fire hydrants
- Consistent water pressure to standard of 60 pounds per square inch for customers



Water System and Pressure Zones

- Our system is divided into 52 pressure zones (primarily gravity-driven)
- 260 system pressure regulating valves
- 25 water pump stations
- 38 water storage tanks

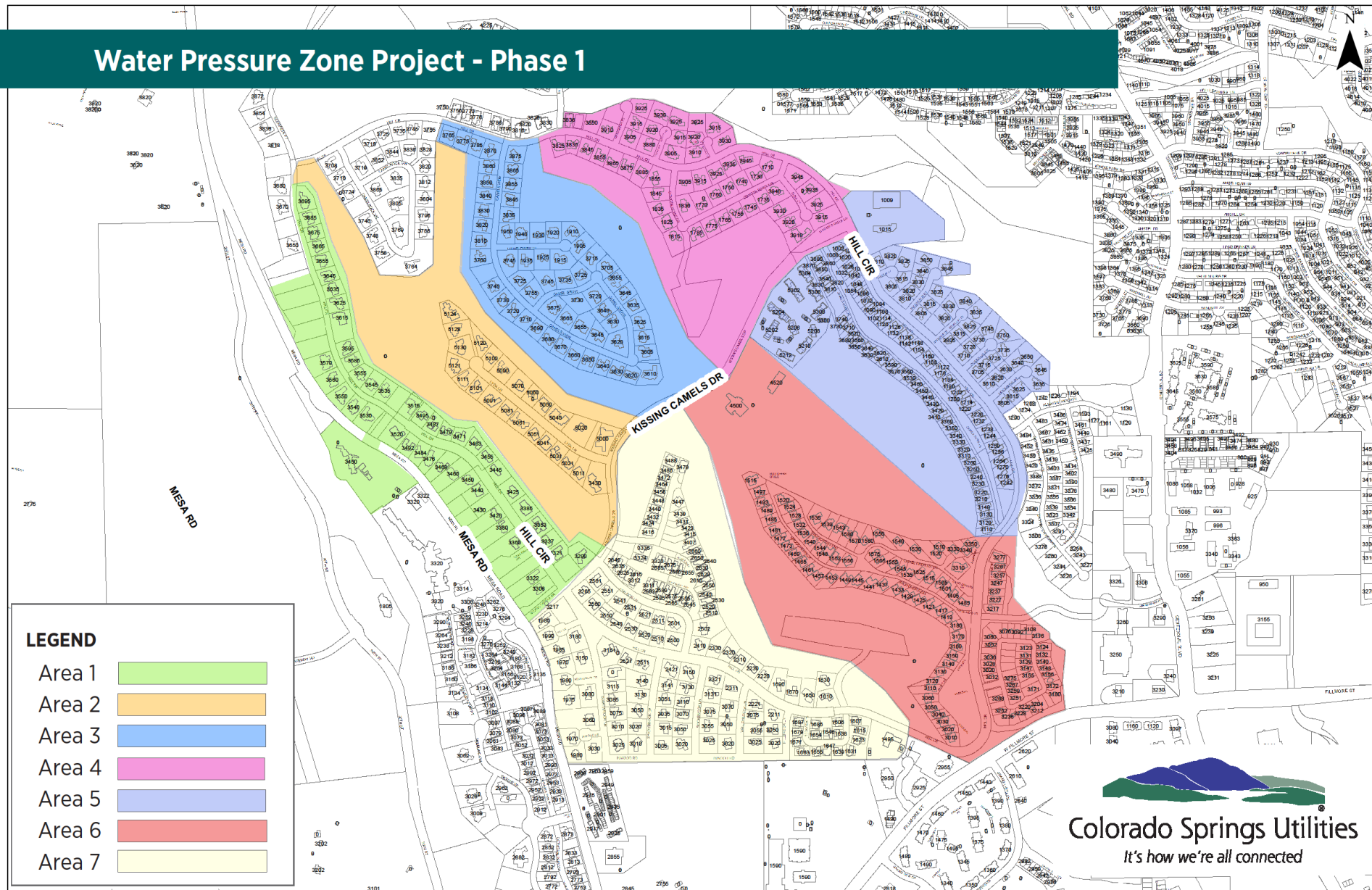


Phase 1- Evaluating and installing pressure reducing valves (PRVs)

- What is a pressure reducing valve?
- System valves vs. residential valves
- Pressure reducing valves (PRV) evaluation
 - Permission to Enter Form
 - Assessment Areas

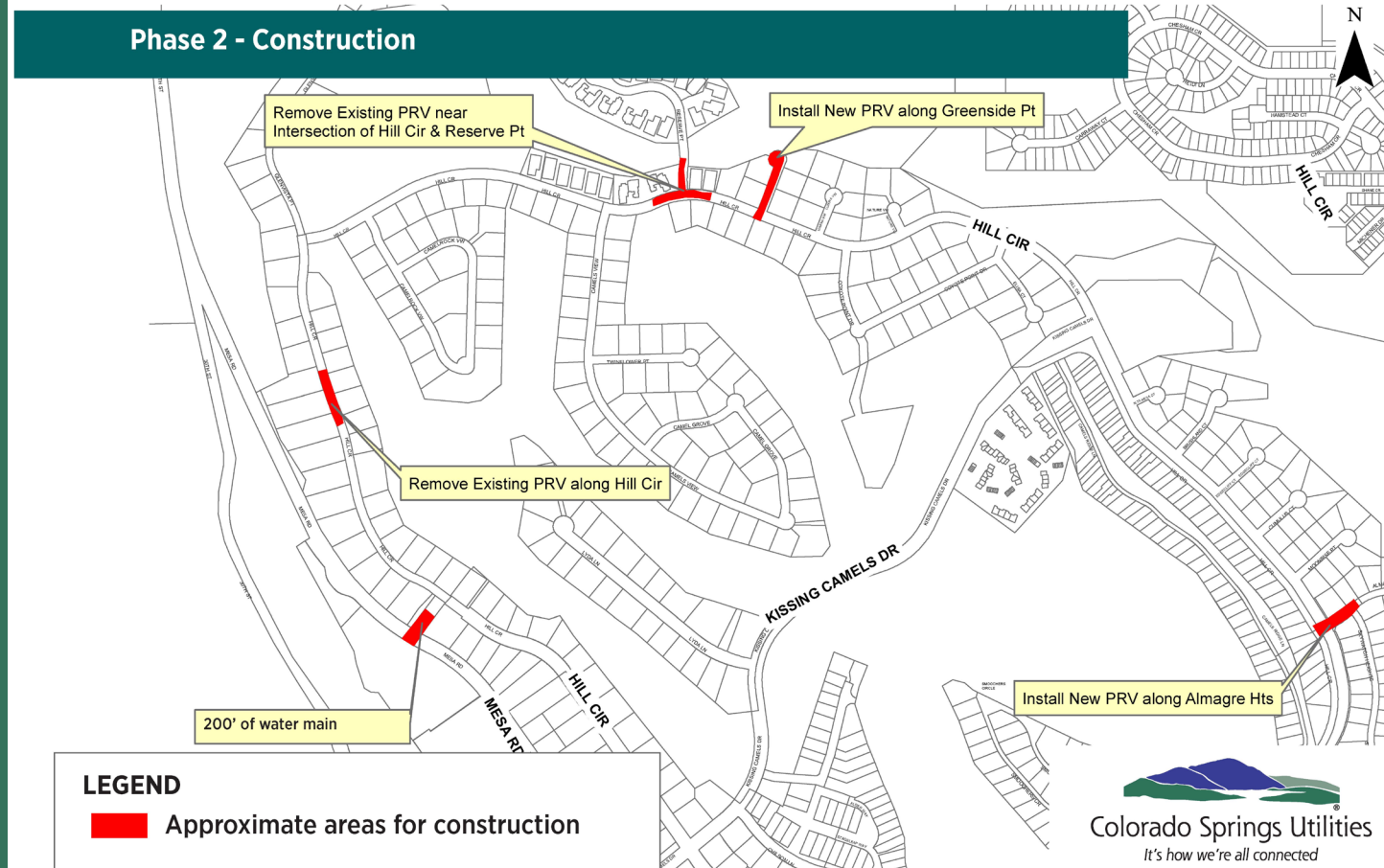


Water Pressure Zone Project - Phase 1



Phase 2- Construction

- Install 200 feet of 8-inch diameter water main
- Remove two existing pressure reducing valve vaults
- Install two new pressure reducing valve vaults



Customer Data Protection

Our priorities:

- Protect your personal information and privacy.
- We use robust cyber security policy and best practices to protect your information.
- We are committed to the prevention of data loss and/or unauthorized access.



Evaluation Process

- Permission to Enter form: Digital and physical options
- Signed copy provided to customer

Next Steps

- Contractor identification
- Receive a call to schedule appointment
 - Access inside your home
 - Takes about 10 minutes
- If PRV replacement needed, this may take additional time or may need a separate visit



<https://forms.office.com/r/pqZJkxXSvX>

Project Timeline

- **August – September 2025:** Agreements
- **Fall 2025 – 2026:** Phase 1
- **2026:** Phase 2
- **2026:** Project completion and customer notifications



Hot topics

Your questions answered



Can the existing pipes handle the increased water pressure?



Will this improve my water pressure?



Will I have a water outage?



What if I don't agree to the PRV assessment?



What if I have a booster pump? Anything else I need to change on my plumbing system?



Will this increase my bill?



[https://forms.office.com
/r/pqZJkxXSvX](https://forms.office.com/r/pqZJkxXSvX)



Colorado Springs Utilities[®]

It's how we're all connected